

To continue its program of quality and design improvement, the manufacturer reserves the right to change specifications, designs or prices without notice and without incurring obligation.

GRAVELY
 ILLUSTRATED
Parts and Price List
 PRINTED IN U. S. A.

ROTARY PLOW

#283

Model Nr.

Effective Date: May 15, 1963

Form Number: IPP-1

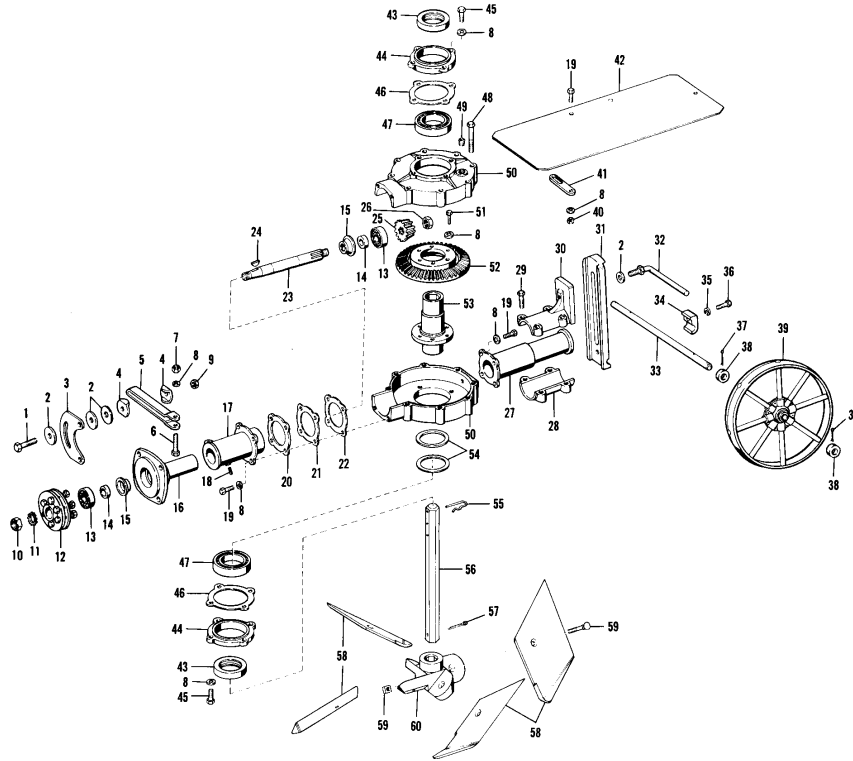


Photo No.	No. Req'd.	Part No.	Description	Price
1	1	172-S	Adjusting Bolt	\$.18
2	10	410-W	Adjusting Bolt Washer	.01
3	1	A-301	Adjusting Bracket	.66
4	2	413-W	Adjusting Spacer	.12
5	1	A-302	Adjusting Handle	1.10
6	1	151-S	Adjusting Handle Bolt	.08

(Continued On Back)

Photo No.	No. Req'd.	Part No.	Description	Price
7	1	205-N	Adjusting Handle Bolt Nut	.03
8	15	305-W	Washer, For Items 19,45,48	.01
9	1	211-N	Adjusting Bolt Nut	.04
10	1	1304	Safety Clutch Nut	.15
11	1	309-W	Pinion Drive Shaft Lock Washer	.02
12	2	NN	Slip Clutch Complete With (S.C. 33 Tapered Drive Plate)	10.31
13	2	3147	Pinion Drive Shaft Bearing	3.96
		3147-C	Pinion Drive Shaft Cone	2.48
		3147-R	Pinion Drive Shaft Race	1.48
14	2	L-126	Drive Shaft Oil Seal Single	.70
15	2	3151	Drive Shaft Oil Seal Retainer	.20
16	1	M-101	Swivel Casting	5.09
17	1	M-102	Swivel Housing	4.68
18	1	903-G	Swivel Casting Grease Fitting	.11
19	14	111-S	Bolt, Swivel Casting, Gear Housing Ext.	.07
20	2	M-326	Gear Housing Gasket	.06
21		M-139	.005 Bearing Adjusting Shim	.09
22		M-139	.020 Bearing Adjusting Shim	.19
23	1	M-308-S	Pinion Drive Shaft	2.60
24	1	504-K	Bevel Pinion Gear Woodruff Key	.02
25	1	5309-S	Bevel Pinion Gear	6.25
26	1	227-N	Pinion Drive Shaft Nut	.23
27	1	5331	Gear Housing Extension	4.29
28	1	5328	Wheel Bracket Cap	1.85
29	4	137-S	Wheel Bracket Swivel Bolt	.06
30	1	5326	Wheel Bracket Swivel	2.27
31	11	5303	Wheel Bracket	2.51
32	1	5325	Wheel Bracket Clamp	.51
33	1	5311	Depth Wheel Axle	2.40
34	1	5304	Axle Clamp	.28
35	1	308-W	Axle Clamp Lock Washer	.01
36	1	152-S	Axle Clamp Bolt	.11
37	4	603-C	Axle Thrust Collar Pin	.01
38	4	A-374	Axle Thrust Collar	.24
39	2	5327	Depth Wheel	4.20
40	2	205-N	Dirt Shield Brace Bolt Nut	.03
41	2	2703	Dirt Shield Brace	.24
42	1	5324	Dirt Shield	1.76
43	2	5318-A	Gear Housing Oil Seal	1.76
44	2	5308	Housing Bearing Cap	1.98
45	8	121-S	Housing Bearing Cap Bolt & Dirt Shield Brace Bolt	.06
46		5317	Bearing Adjusting Shims, .005 Thickness	.07
47	2	2208-C	Bevel Gear Hub Bearing Cap	4.40
	2	2208-R	Bevel Gear Hub Bearing Race	2.19
48	8		Gear Housing Bolt 6 CH 20-C	.10
49	1	702-VP	Bevel Gear Housing Plug	.15
50	1	5330	Upper & Lower Gear Housing Set	15.00 Pr.
51	6	110-S	Bevel Gear Bolt	.07
52	1	5315	Bevel Gear	5.50
53	1	5306	Bevel Gear Hub	5.06
54		5413	Bevel Gear Hub Adjusting Shim	.07
55	1	5310-C	Rotor Axle Depth Adjusting Pin	.08
56	1	5310-STD	Rotor Axle	3.50
57	1	604-C	Rotor Axle Pin	.02
58	4	5322	Rotor Spade Cutter	2.10
59	4	153-S	$\frac{1}{2}$ " x $1\frac{1}{2}$ " #3 Plow Bolt	.10
60	1	5312	Rotor Spider Hub	4.77
61	4	153-N	Square Nut	.02